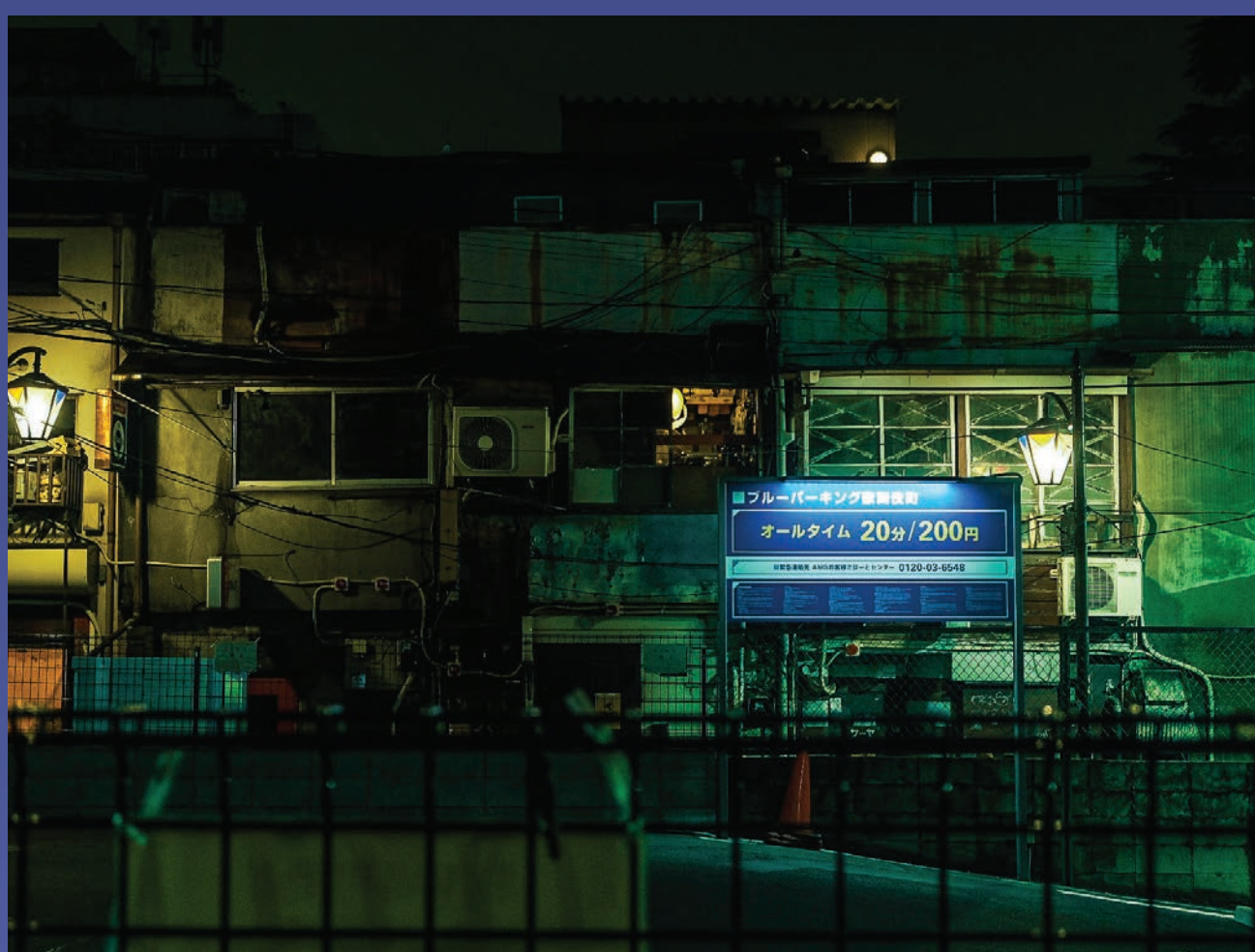




TSB ARENA & SHED 6 | SAT. 18 JUNE 2022 | 11AM - 6.30PM



TOKYO BY NIGHT IN TIMES OF COVID

An exhibition not to be missed!

Young Japanese photographer Kana Hashimoto's haunting photos of night-time Tokyo capture the stillness of a city suspended in time, waiting for an end to the Covid-19 pandemic.

Hashimoto took all her photos over recent months when the pandemic kept people behind closed doors. Born in the countryside, she says she likes the silence of the city at night and "the light that floats up from the depths of darkness."

GIANT KIMONO

Wow! Look out at the Festival for two giant kimono and colourful banners created by school children from around New Zealand.

To create the giant kimono, students from 16 schools paint calico panels on the theme of friendship between New Zealand and Japan. It was no small task they faced: each panel measured some 10 square metres.

Another 14 schools painted 40 banners on the theme of Tanabata – also known in Japan as the Festival of Stars – and the celebration in New Zealand of Matariki.

The Asia New Zealand Foundation sponsored the two projects as part of its programme of activities to bring Asia into the classroom.



TIME FOR TEA

This year's Festival will feature a very special 70 VIPs Japanese Tea Ceremony to mark the 70th anniversary of diplomatic ties between New Zealand and Japan.

Guest of Honour will be the Governor General, the Rt Hon. Dame Cindy Kiro, who will officially open the Festival.

Keep an eye out for the Tea Bowls and Five New Zealand Potters stall! Well known potters will display sets of Japanese-inspired tea bowls made specially for the Festival.





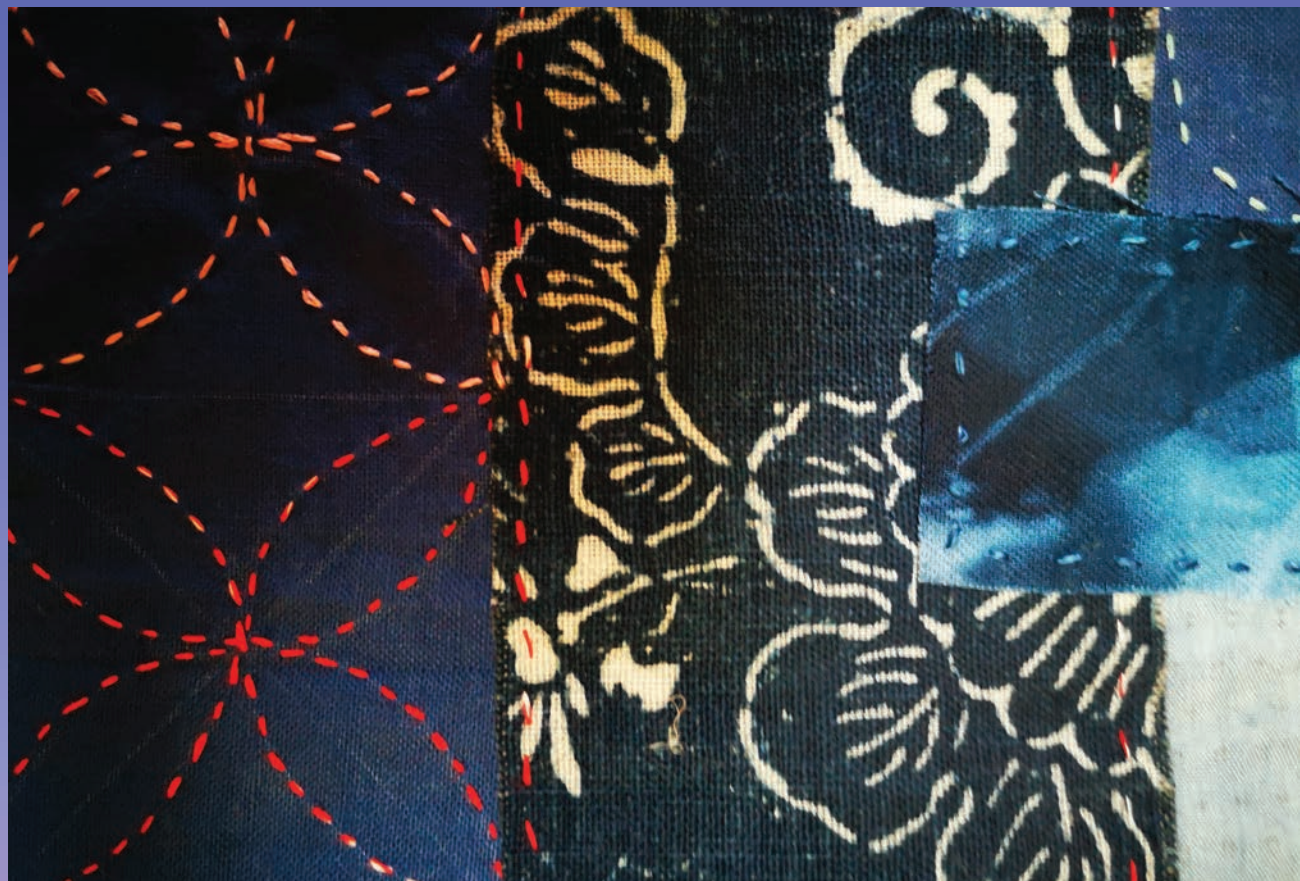
SLEEPWALK SKELETON

Sleepwalk Skeleton is New Zealand’s original Japanese J-Pop/Rock band. It began life back in 2011 as a J-Pop cover band, set up by a handful of J-Pop / Rock / Anime enthusiasts. The five member band has evolved over the years and now produces its own songs and music videos. Guitarist, composer and founding member Kevin Kim says the band’s goal is to raise awareness of J-Pop/Rock in New Zealand and be recognised as one of the leading J-Pop bands.



MUSICAL TRIO AKANE

Auckland-based trio Akane play Japanese music, including folk songs from all over Japan, delivered in traditional style or to Akane’s unique arrangement. Their repertoire includes shigin – the art of singing Japanese poetry – by Atsuko, the band’s vocalist. Backed by dynamic Tsugaru shamisen and Japanese drums, this is a performance not to be missed!



SASHIKO EXHIBITION AND WORKSHOP

Sashiko (literally “little stabs”) is a type of traditional Japanese embroidery or stitching used for decorative work and to reinforce cloth and clothing. Traditionally white cotton thread was used on an indigo-dyed blue cloth. Visit the Sasiko exhibition on the first floor and sign up for the special Sashiko stitch craft workshop from 1-2pm! Materials will be provided as kits, with a small work to take away. Limited to 20 participants.



“YOKAI” LIVE DRAWING BY JUN ARITA

Mythical Japanese monsters known as “Yokai”, have lurked in every aspect of Japanese life and culture for hundreds of years. These unique spiritual entities have captivated people through ghost stories, folktales, and anime. Auckland-based Japanese pop artist and illustrator Jun Arita will present a live drawing of auspicious kinds of “Yokai”. Born in Osaka, Jun came to New Zealand in 2007, since when he’s been busy designing packages for products, performing live art, and creating public mural artwork.



TSUGARU SHAMISEN NEO

The Tsugaru shamisen is a version of the traditional shamisen – a Japanese three-stringed instrument – designed to give players room to improvise. Performances of Tsugaru shamisen have been likened to Western jazz. The Japan Festival is delighted to welcome Auckland-based Tsugaru Shamisen Neo to play in Wellington with the support of the Embassy of Japan.

MAKE A WISH AT OUR WISHING TREE!

Tanabata, also known as the Star Festival, celebrates an old love story about Orihime, daughter of the Sky King, and her beloved, Hikoboshi. They could meet only once a year, on the 7th day of the 7th month. Legend has it that the heavenly river dividing the couple is the Milky Way, and the lovers are the stars Vega (Orihime) and Altair (Hikoboshi).

During the Tanabata festival, people write their wishes on strips of coloured paper (tanzaku) and hang them on bamboo stalks. Make your own wish on our Wishing Trees!



PROGRAMME

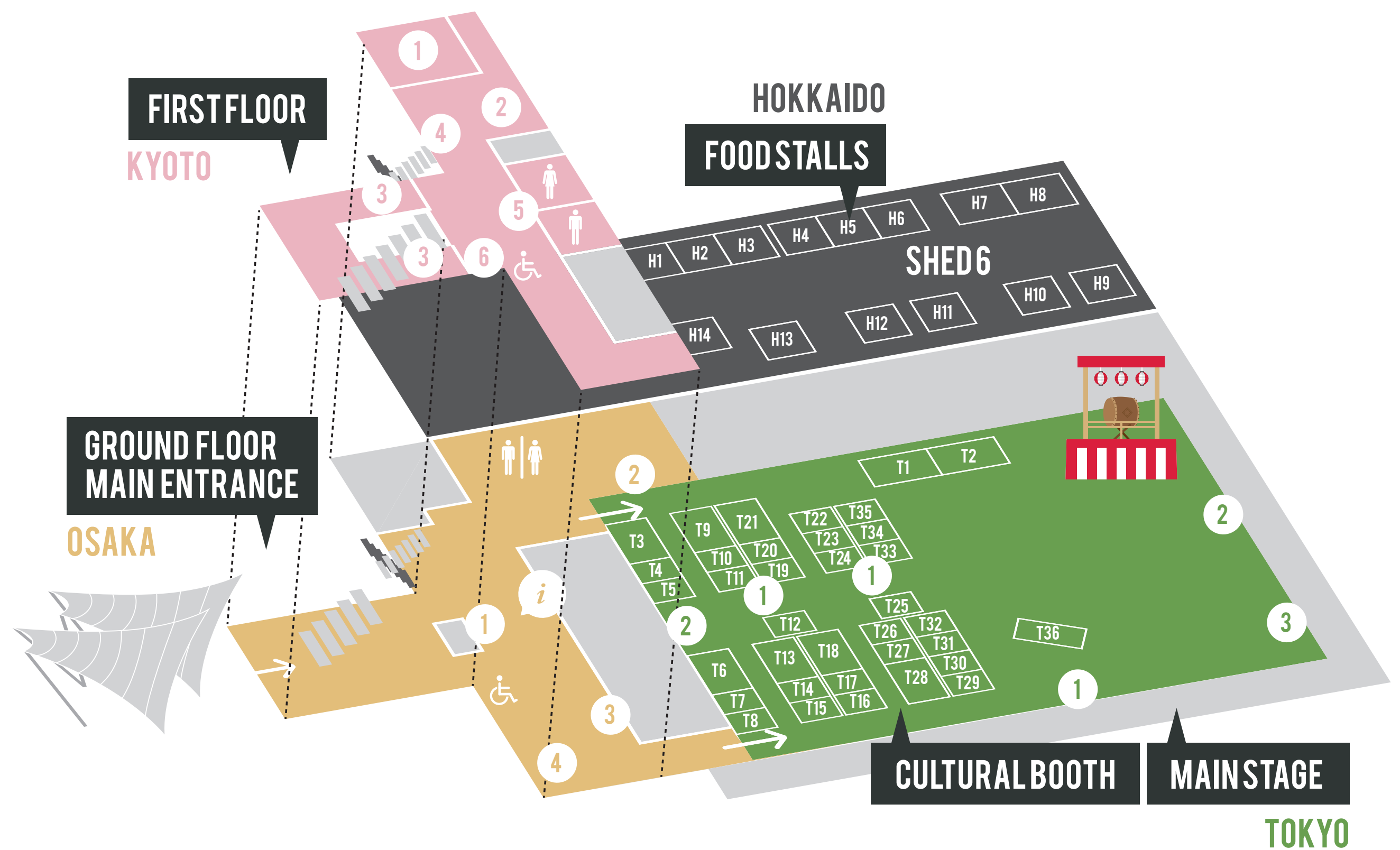
TOKYO AREA - MAIN STAGE

11:00	Taiko drumming performed by Taikoza
11:10	Koten classical Japanese Dance performed by Koten Dance Group
11:25	Japanese pop art talk & live drawing yokai performed by Jun Arita - Artist and Illustrator
11:45	Announcement of the winner of the School Banner Competition
11:50	Shakuhachi (bamboo flute) performed by Yoshikuni Hasegawa
12 noon	Opening Ceremony including Tea Ceremony and speeches
12:35	Shamisen music performed by Auckland Tsugaru Shamisen 音緒 -Neo-
12:55	Kendo demonstration performed by Yōshinkan Kendo Club
13:10	J-Rock performed by Sleepwalk Skeleton
13:30	Japanese traditional music performed by Akane
13:50	Love Life Cosplay dance performed by Merpington
14:00	Introducing Honeywa: WSA yurukyara, and SWA President message
14:10	Ao: Māori / Japanese Musical Collaboration
14:25	Neo Kimono Style fashion show performed by Essence of Japan
14:40	Shibuya Scramble song covers performed by Caryl Loria Illana
14:50	Hukutsu no Seishin Judo demonstration performed by Wellington Judo Academy
15:05	Taiko drumming performed by Taikoza
15:20	Naginata demonstration performed by Wellington Naginata Club
15:35	Japanese pop art talk & live drawing yokai performed by Jun Arita - Artist and Illustrator
15:55	Maako Music
16:15	Kyudo/ Japanese Archery demonstration performed by Wellington Kyudo Club
16:40	Shamisen music performed by Auckland Tsugaru Shamisen 音緒 -Neo-
17:00	Katie Pyon Idol Performance performed by Katie Pyon
17:10	J-Rock performed by Sleepwalk Skeleton
17:30	Acemetric alt idol live performed by Acemetric
17:40	Japanese traditional music performed by Akane
18:00	Spring Daydreams Cosplay performed by Lily White Butterfly
18:10	Taiko drumming performed by Narukami Taiko

"PROGRAMME TIMES AND PERFORMERS MAY CHANGE DUE TO UNFORESEEABLE COVID CIRCUMSTANCES."



FLOOR MAP



TOKYO AREA

T1	Creative Pop Cards
T2	Tea Ware - Aotearoa
T3	MiniGardens Bonsai NZ
T4	Asian Family Services
T5	Certified KonMari Tidying Consultant
T6	Anime House
T7	Visit Japan/ JNTO
T8	Pochette
T9	Welly Girl - Arts & Gifts
T9	Saisei
T10	WAFU Art Jewellery
T11	Wellington In the Style of Hiroshige
T12	Daizy Design Face Painting
T13	Kendo, Iaido, Naginata
T14	Lovely Nature New Zealand
T15	Brendan Grant Artwork
T16	Japan Society of Wellington
T17	Japanese Textiles
T18	LUMEN
T19	NEKO NGERU Cat Cafe
T20	Origami Craft
T21	Sakura Television
T22	JETAA Wellington Stamp Rally
T23	Amy Couling Visual Artist
T24	Tanuki & Co
T25	Spare
T26	NEKO Craft
T27	Ema Frost - Artist
T28	Embassy of Japan
T29	Othello Boardgame Wellington

TOKYO AREA

T30	Innocent flower
T30	Whooshful Works
T31	Tui Tuia Learning Circle - Languages
T32	Japan Local Government Centre (CLAIR Sydney)
T33	Matcha15
T34	Wellington Sakai Association
T35	Essence of Japan & Japanese Body Therapy
T36	Zespri

TOKYO AREA

- 1 Tanabata Wishing Tree
- 2 Giant Kimono Exhibition
- 3 Pram Station

OSAKA AREA

- 1 Haiku
- 2 Photobooth
- 3 Tanabata Wishing Tree
- 4 Taiko Workshop
12.00/ 12.40/ 2.00/ 2.40

HOKKAIDO AREA - SHED 6

H1	Pastane
H2	Hey Ramen
H3	Osawa Wines
H4	Rembuden
H5	The Bento Bar
H6	Kiwi Success Trading Co. Ltd
H7	Mr Circle & Soba noodles
H8	The Ramen Shop
H9	Collective Coffee Shop & Co
H10	JETAA Wellington Taiyaki
H11	Oryzae Amazake
H12	ZENKURO SAKE 全黒酒
H13	Tatsushi
H14	JFC New Zealand

KYOTO AREA - FIRST FLOOR

- 1 Sashiko Exhibition and Workshop
- 2 Kids' Sumo Arena
- 3 Orizome Kites
- 4 "Tokyo in Times of Covid" photo exhibition
- 5 Ikebana Exhibition - Sogetsu School
- 6 Pop-up Performances